

CRANE[®] MERCHANDISING SYSTEMS

SERVICE INFORMATION

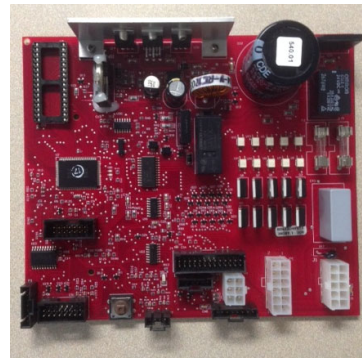
M145.1

MODELS AFFECTED: All Pepsi/Generic SBC and SIID Stack Venders.

MODEL NUMBERS: 24VDC SBC Controller used in P Series, DN640, DN448, and 115VAC SBC Controllers used in E-Model and DNCB 1 1/4" Deeper and T-Model Venders.

Revised: 3/12/19

Reason: To provide instructions for installing a New SBC All in One Control Board in venders with SBC or SIID Control Boards.



For P Series Venders order:

- **105301 (old # 63115670) New SBC Pepsi/Generic Controller Assembly**

Includes:

- 101246 (old # 80493048) ASSY Pepsi/Generic SBC All In One Controller
- 400896 (old # 80493054) (540.31 new release) Software Pepsi/Generic All in One SBC controller
- 101026 (old # 80491397) DEX harness (15" long) and 100162 (old # 80080165) DEX Harness Nut.

For E-Model, DNCB & T-Model Venders order:

- **105301 (old # 63115670) New SBC Pepsi/Generic Controller**

(Order when replacing an existing SBC Controller)

Includes:

- 101246 (old # 80493048) ASSY Pepsi/Generic SBC All In One Controller
- 400896 (old # 80493054) (540.31 new release) Software Pepsi/Generic All in One SBC Controller
- 101026 (old # 80491397) DEX harness (15" long) and 100162 (old # 80080165) DEX Harness Nut.

SERVICE INFORMATION

- **114527 (old # 65400020024) SBC Conversion Controller SIID With Out Display Board Kit**

(Order when replacing a SIID Board w/ 14 segment display)

Includes:

- 105301 (old # 63115670) New All in One SBC Controller
- 100781 (old # 80492488) MDB SBC to SIID Conversion Harness
- 100782 (old # 80492489001) SBC to SIID Legacy Display Harness
- 101026 (old # 80491397) DEX harness (15" long) and 100162 (old # 80080165) DEX Harness Nut.

- **114409 (old # 65400040024) SBC Conversion Controller SIID With Display Board Kit**

(Order when replacing a SIID Board w/ 7 segment display)

Includes:

- 105301 (old # 63115670) New All in One SBC Controller
- 100781 (old # 80492488) MDB SBC to SIID Conversion Harness
- 100691 (old # 80492515) 14 Segment Display Board Assy.
- 100782 (old # 80492489001) SBC to SIID Legacy Display Harness
- 101026 (old # 80491397) DEX harness (15" long) and 100162 (old # 80080165) DEX Harness Nut.



SIID 14-Seg



SIID 7-Seg

New All in One Controller will not work with 7 Segment Displays, you will need to update to 14 Segment Display.

- New controller software 540.31 programs the same as old controller software versions 540.21, 871.61, 240.81, & 381.41.
- Note: Software is not backward or forward compatible in Controllers.

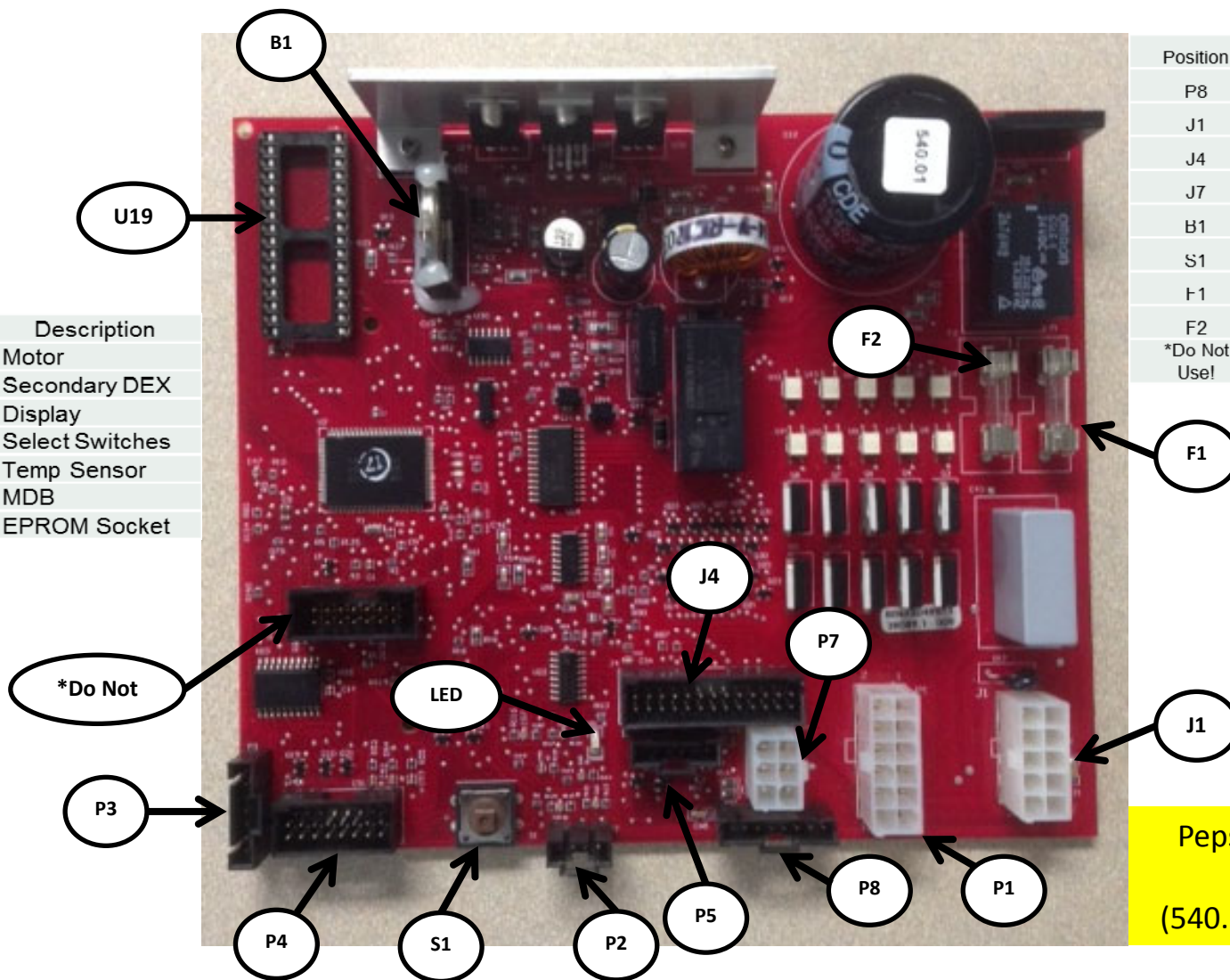
Upon installation of the new SBC All In One Controller if you have the following issue the 1st time power is applied refer to pages 6 and 7 of this document. The display reads "Sold Out" with product in columns and will not vend.

If you have any questions please contact your Crane Merchandising Systems Representative or the Technical Service Department at 803-266-5001, then press 4.

CRANE[®] MERCHANDISING SYSTEMS

SERVICE INFORMATION

Position	Description
P1	Motor
P2	Secondary DEX
P3	Display
P4	Select Switches
P5	Temp Sensor
P7	MDB
U19	EPROM Socket



Position	Description
P8	Energy Management
J1	AC Power
J4	Home Switch
J7	Optional
B1	Battery
S1	Service Switch
F1	1.6A Transformer AC Power
F2	6.3A Motor Power
*Do Not Use!	Crane Engineering Use Only (covered by metal board cover)

Pepsi/Generic Software
80493054
(540.31 is current release)

SERVICE INFORMATION

New SBC All in One controller software 540.31 programs the same as old controller software versions 540.21, 871.61, 240.81, & 381.41.

Note: Software is not backward or forward compatible in the different Controllers.

Notes:

The new All In One Controller will replace both the:

- 24VDC SBC Controller used in P Series, DN640, DN448
- 115VAC SBC Controllers used in E-Model, DNCB 1 ¼" Deeper and T-Model Venders which had a microprocessor that went end of life and is no longer available.

The wiring harness for power connects the AC or DC to the correct pin.

The software can detect which type of machine it is in by looking for cam switches and sold out switches.

The software was developed to run all models.

This covers every SIID & SBC E-Model, DNCB 1 ¼" Deeper and T-Model Vender made by Dixie-Narco.

- **5 Column Venders**

DN300-5

- **6 Column Venders**

DN276-6, DN168-6, DN360-6, DN630T-6, DN522-6, DN552-5, DN552-6, DN552-7, DN552-8, DN756-10DP

- **7 Column Venders**

DN276E-7, DN276E-HV-6, DN276E-HV-5, DN504-6, DN504-7, DN504-8, DN532-5, DN532-6, DN532-7, DN532-8, DNCB448-6, DNCB448-7

- **8 Column Venders**

DN368-8, DN501T-8, DN440-8, DN600T-8, DN756-7, DN756-8, DN756-9, DN756-10, DN756-11, DN756HV-11, DN756-12, DN756HV-12, DN756-13.

- **9 Column Venders**

DN501E-9, 600E-10, DN600E-9, DN600E-HV-12, DN501E-HV-12, DN501E-HV-11, 501E-10, DN600E-HV-11.

- **10 Column Venders**

DN348-10, DN414-10, DN640-8, DNCB640-9, DNCB640-10, DNCB640HVV-11, DNCB640HVV-12, DN720-8, DN720-9, DN720-10, DN720-12, DN760-9, DN760-10, DN760-11, DN760HV-11, DN760-12, DN760HV-12, DN760-13, DN770HV-11, DN770-12, DN770HV-12.

SERVICE INFORMATION

Frequently asked questions:

- Why was the software change to 540.31?
 - Software was change to resolve an issue which caused some cashless devices not to work and show the message “Disabled from VMC”.
- Why was the control board changed?
 - New All in One SBC Controller replaces existing controller which had a microprocessor and other parts that went end of life and are no longer available.
- How does the new board work in both 24VDC and 115VAC applications?
 - The wiring harness for power connects the AC or DC to the correct pin.
 - The software can detect which type of machine it is in by looking for cam switches and sold out switches.
- Why was the DEX phono port removed from the control board?
 - The onboard DEX phono port was removed due to board failures caused by mishandling by Technicians and/or Route Drivers when downloading DEX information from the venders.
- What DEX Harnesses work with the new board?
 - Crane provides the following that may be ordered through After Market Parts:
 - 101026 (old # 80491397) DEX Harness 15” long (included when ordering board kits listed on pages 1 & 2)
 - 100730 (old # 80490783) DEX Harness 66” long
 - 100162 (old # 80080165) Nut, DEX Harness (included when ordering board kits listed on pages 1 & 2)
- If I have more questions?
 - Please contact
 - Your Crane Merchandising Systems Representative or
 - Crane Merchandising Systems Tech Support in Williston, SC:
 - phone: (803) 266-5001, press 4 for Tech Support
 - Email: service@cranems.com

SERVICE INFORMATION

New SBC All In One Controllers in E-Models, DNCB 1 ¼ " Deeper and T-Model Vender Models with software revision 540.31 that are not one of the listed select / column combinations may have the following issue the 1st time power is applied. The display will read "Sold Out" with product in columns and will not vend.

If not one of these combinations the vender may experience the "Sold Out" issue described above.	
# of Select Buttons	# of Columns
5	7
5	9
6	7
7	8
7	9
9	10

To correct the issue:

The Space to Sales will need to be programmed in the machine.

If the model number of the machine is incorrect:

1. Remove power from the machine.
2. Remove the battery from the controller for a full minute.
3. Reinstall the battery and turn the power on.
4. The display should read MODL.
5. Press button one and the display should read a model number.
6. If the model displayed is the correct model press button one to set the machine to that model, if the model is not the correct, press and hold buttons one and two at the same time until the correct model is displayed then press button one to set the machine to that model.
7. Machine will read SOLD OUT, press the mode button on the controller and HD (Historical Data) should be displayed.
8. Press and hold buttons one and two until the display reads USER, press button number one.
9. The display should read STS, press button number one.
10. The display should read CL1 NCA, press button one.
11. Display should read CL 010, press and hold button 1 until the display reads CL 011. Press and hold buttons 1 and 2 until the display reads RTN, press button one. The display should scroll SEL1 1.
12. Press buttons 1 and 2 and until the display reads SEL2 NCA, press button one.
13. Display should read CL 010, press and hold button 1 and 2 until the display reads CL 020. Press and hold button 1 until the display reads CL 021. Press and hold buttons 1 and 2 until the display reads RTN, press button one. The display should scroll SEL2 2.
14. Press buttons 1 and 2 and until the display reads SEL3 NCA, press button one.
15. Display should read CL 010, press and hold button 1 and 2 until the display reads CL 030. Press and hold button 1 until the display reads CL 031. Press and hold buttons 1 and 2 until the display reads RTN, press button one. The display should scroll SEL3 3.
16. Press buttons 1 and 2 and until the display reads SEL4 NCA, press button one.
17. Display should read CL 010, press and hold button 1 and 2 until the display reads CL 040. Press and hold button 1 until the display reads CL 041. Press and hold buttons 1 and 2 until the display reads RTN, press button one. The display should scroll SEL4 4.
18. Press buttons 1 and 2 and until the display reads SEL5 NCA, press button one.

SERVICE INFORMATION

19. Display should read CL 010, press and hold button 1 and 2 until the display reads CL 050. Press and hold button 1 until the display reads CL 051. Press and hold buttons 1 and 2 until the display reads RTN, press button one. The display should scroll SEL5 5.
20. Press buttons 1 and 2 and until the display reads SEL6 NCA, press button one.
21. Display should read CL 010, press and hold button 1 and 2 until the display reads CL 050. Press and hold button 1 until the display reads CL 051. Press and hold buttons 1 and 2 until the display reads RTN, press button one. The display should scroll SEL5 5.
22. Press buttons 1 and 2 and until the display reads SEL6 NCA, press button one.
23. Display should read CL 010, press and hold button 1 and 2 until the display reads CL 060. Press and hold button 1 until the display reads CL 061. Press and hold buttons 1 and 2 until the display reads RTN, press button one. The display should scroll SEL6 6.
24. Press buttons 1 and 2 and until the display reads SEL7 NCA, press button one.
25. Display should read CL 010, press and hold button 1 and 2 until the display reads CL 070. Press and hold button 1 until the display reads CL 071. Press and hold buttons 1 and 2 until the display reads RTN, press button one. The display should scroll SEL7 7.
26. Press buttons 1 and 2 and until the display reads SEL8 NCA, press button one.
27. Display should read CL 010, press and hold button 1 and 2 until the display reads CL 080. Press and hold button 1 until the display reads CL 081. Press and hold buttons 1 and 2 until the display reads RTN, press button one. The display should scroll SEL8 8.
28. Press buttons 1 and 2 and until the display reads SEL9 NCA, press button one.
29. Display should read CL 010, press and hold button 1 and 2 until the display reads CL 090. Press and hold button 1 until the display reads CL 091. Press and hold buttons 1 and 2 until the display reads RTN, press button one. The display should scroll SEL9 9.
30. Press the mode button on the controller and the machine should go back to the ready mode.
31. Close vender door and test for proper operation.